

2022

Spring - Summer

Lookbook

EBB&FLOW



BOLD & FRESH

With positivity, courage and an appetite for life, EBB & FLOW introduces a new range of fabric lampshades for Spring 2022. A collection both bold and fresh for creating inspiring spaces to thrive in. Colours and patterns with real zest and freshness make up the new collection of fabric lampshades. A variety of fabrics that elevate and inspire, curated by EBB & FLOW designer, Susanne Nielsen.

The collection celebrates exclusive names from the world of fabrics such as Christian Lacroix, Designers Guild, and Scion. Synergising extravagance, playfulness, and luxury, the selection adds three unique qualities, making them the perfect partners for the EBB & FLOW lamp collection.

We make room for personality, and this season, we present exquisite silks in striking check patterns, extravagant feathers as well as cheerful and retro fabric lampshades. All to match our handmade lamp bases or to hang as pendant lamps.

Almost like a ballgown, the check patterns in luxurious silk are wonderfully tactile and irresistible. The straight lines lend themselves perfectly for a lampshade and will liven up the space. Choose between striking Fushia, Cobalt, Azure, and deep Ochre.

The exuberant feather fabrics from Christian Lacroix add a unique and baroque style to the collection. A truly bold and artistic pattern with incredible details and nuances.

The retro feel of the Poppy Pop design combined with Ferns and adventurous Jackfruit and Beanstalk are a playful addition to the range. Young and honest somehow, and the cotton and linen choice of fabric quality reflects this perfectly.

Bold and fresh. With an appetite for luxury and playfulness.



"To me, Rowan is like an old friend. You don't need to explain so much, you just pick up where you left last time you met."

"Being the first EBB & FLOW design, Rowan takes pride of place above my own dining table"

Susanne Nielsen,
Designer



About EBB & FLOW

We are a brand of personality. A brand of liberation and meaningful interior design. EBB & FLOW is not driven by fashion or trends. We design decorative lighting that adds character and personality to any space. Design that lasts for years. We specialise in decorative and innovative lighting and have recently expanded our collection with exclusive crystal bowls. A modern collectable.

All products are designed by our Founder and Designer, Susanne Nielsen. Inspired by perfume bottles, jewellery, and British antique markets, all products are designed focusing on organic shapes, proper raw materials, and an eye for detail.

The collection holds everything from simplistic and elegant designs to sculptural statements. Choose between table/floor lamps, wall lamps, pendants, surface lamps, and fabric lampshades produced by hand in glass, crystal, brass, and luxurious fabrics.

Handmade production is at the heart of EBB & FLOW. All products are produced by hand in Europe using traditional craft methods. We celebrate uniqueness, impressive craftsmanship, and the individual story of each product.

With a wide collection of lighting in different colours, shapes, and sizes, we encourage you to let your personality shine.





Handmade

Designed in Denmark and produced in Europe, all EBB & FLOW products are handmade. Glass, crystal, brass, and textile are designed, shaped, coloured, and cut by hand to be assembled into the finished EBB & FLOW product. Impressive craftsmanship ensuring high quality and exclusive products. We celebrate the uniqueness and the personality of handmade production.

Flawless is for diamonds, to the rest of us an illusion

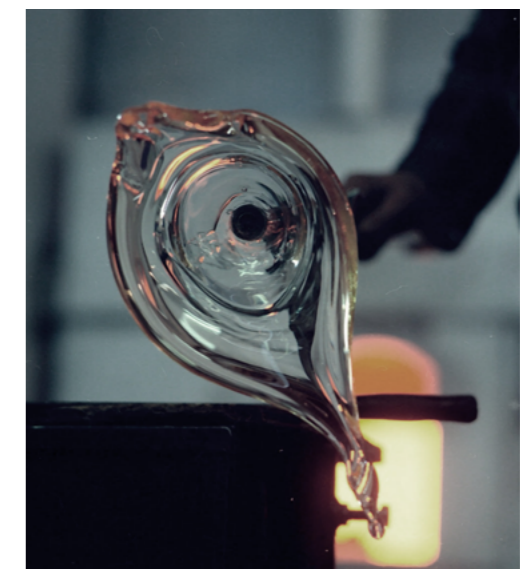
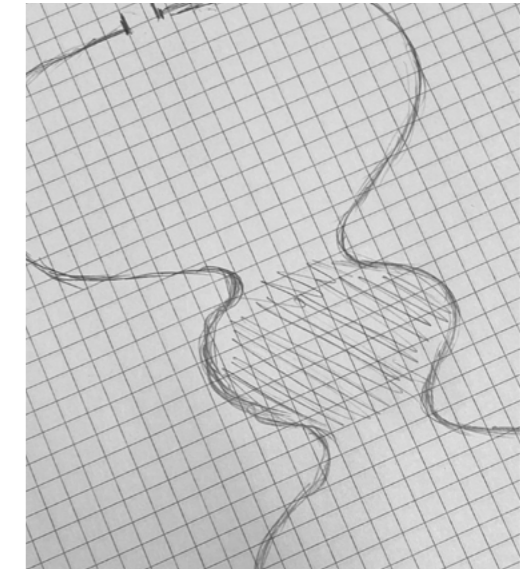
Just like a flower or a loved one is beautiful because of their so-called flaws, not despite them, we too celebrate the uniqueness in the glass and crystal products we design and produce. We strive to make it the best version of itself, give it beautiful curves and lines, using the best craftspeople in Europe. Instead of lamenting the fact that our lamps and vessels will never be flawless, we celebrate them for their personality and lack of uniformness.

The art of glass blowing

It takes four to five craftsmen or women to blow and shape an EBB & FLOW lampshade. Before reaching the production stage, there is a long process of drawings, mould-making, and sampling, until finally the finished product is approved and ready for production. EBB & FLOW glass is blown as clear glass, and the next stages of production involve polishing and hole-drilling. Eventually, the shade is hand-coloured, and the colour is burnt onto the glass.

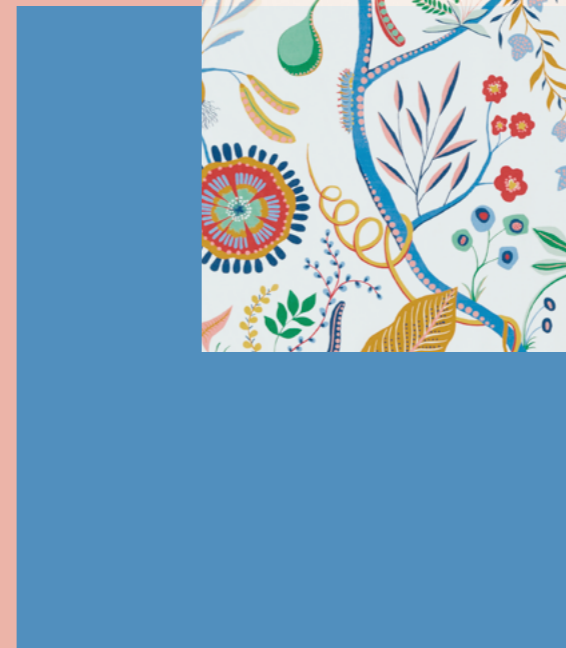
A centuries long history of crystal

All EBB & FLOW crystal pieces are produced in Czech Republic. A place where crystal has a centuries long history carried by craftspeople. Initially, lead was used to add clarity and finesse to crystal, making it soft and easier to cut. For many years, this is how crystal was made. Today, crystal is produced without lead, yet with the same properties as before, the weight and clarity unchanged. Every crystal product is cut by hand, elevating the uniqueness and impressive craftsmanship from start to finish.



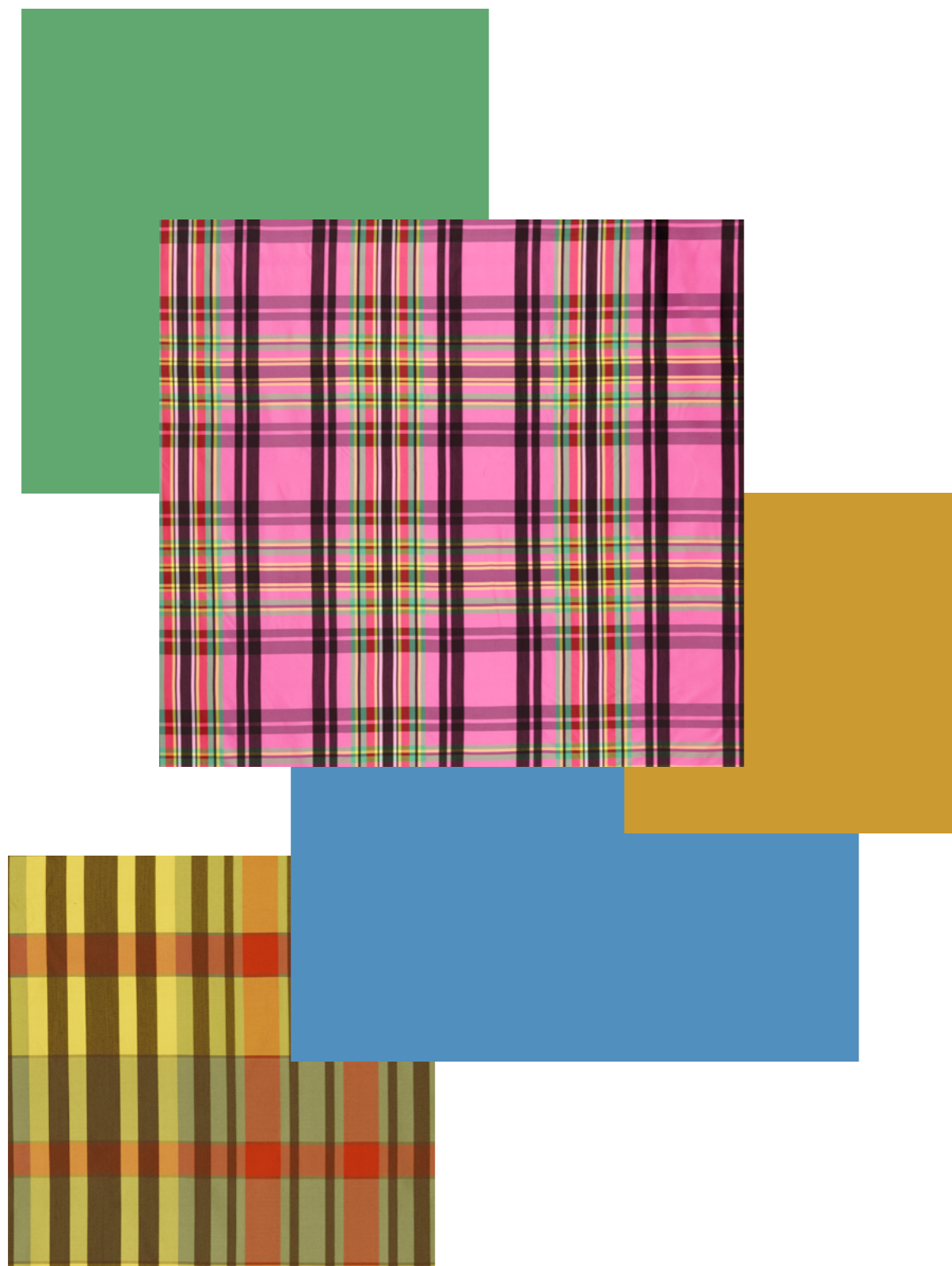
Retro & *playful*





Striking checks in luxurious silk







Extravagant feathers





Contact

For more information,
please don't hesitate to contact us.

Press & marketing

Line@ebbandflow.dk

Sales

Thomas@ebbandflow.dk

ebbandflow.com

EBB&FLOW

Product list

Page 1

Barre lamp base XL in Silver	BA101216
Fabric lampshade in Chennai Cobalt (size G)	SH101130-G

Page 3+4

Rowan pendant XL in Chestnut brown x3	LA101756
---------------------------------------	----------

Page 5

Barre lamp base w. ball XL in Gold	BA101215
Fabric lampshade in Chennai Fuschia (size D)	SH101131-D

Page 7

Barre lamp base M in Silver	BA101204
Fabric lampshade in Jackfruit and the beanstalk Midnight (size D)	SH101125-D

Page 8

Rowan Bowl M in Large check	BO101536
Rowan Bowl M in Medium check	BO101528
Rowan Bowl L in Swirl	BO101506)
Rowan Bowl S in Large check	BO101532)
Rowan Bowl M in Small check	BO101522

Page 9

Uva cluster of 3 pendants	
Uva pendant multi M in Golden smoke x2	LA101951M
Uva pendant multi L in Swirl	LA101998M
Multi-hanging unit in Gold (not seen)	MUG45SGO

Page 10

Horizon pendant M in Toast	LA101794
Rowan Bowl L in Swirl	BO101506

Page 15+16

Futura lamp base XL in Forest green	BA101449
Fabric lampshade in Ferns Juniper (size F)	SH101121-F

Page 17

Fabric lampshade in Poppy Pop – Sage/poppy (size G)	SH101123H-G
Wire hanging unit E27 in Gold	WIE27BAKTWGO
Rowan Bowl L in Swirl	BO101506

Page 21+22

Smykke lamp base M in Crystal check w. Smokey grey ball	BA101140
Fabric lampshade in Banarasi Ochre (size C)	SH101129-C

Page 24

Smykke lamp base L in Topaz blue	BA101906
Fabric lampshade in Chennai Cobalt (size G)	SH101130-G

Page 25+26

Fabric lampshade in Chennai Azure (size G)	SH101128-G
Wire hanging units in Twisted Gold E27	WIE27TWGO

Page 29

Fabric lampshade in Prete-Moi Ta Plume! Bourgeon (size D)	SH101127H-D
Wire hanging unit w. brass ball in Gold E27	WIE27BALLRGO

Page 31

Uva cluster of 3 pendants	
Uva pendant multi M in Ivy green	LA101958M
Uva pendant multi L in Crystal mini check	LA101994M
Uva pendant multi L in Golden smoke	LA101981M
Multi-hanging unit in Gold (not seen)	MUG45SGO